



EURASIA

Institute for International Education

Programmes 2017

1 ABOUT EURASIA	4
Why study in Germany?	4
Student Services	8
2 PATHWAY PROGRAMMES	
BOARDING SCHOOL	10
ACADEMIC PATHWAYS	12
German Foundation Year (Fast Track – Technical & Business)	14
Foundation Standard (State Track)	16
Foundation Elite Engineering & Business Track (TU-Berlin)	18
Foundation Medical Elite Track (Charité)	20
Direct Bachelor (all programmes)	22
Cologne Business School (CBS)	24
Master’s Degrees in Germany	26
CAREER PATHWAYS	
Dual Bachelor’s with Integrated Vocational Training (nursing, dental hygiene and prevention management, physician assistant)	28
Preparation for Physicians	30
Nursing in Germany	32
Internship in Germany	34
3 GENERAL GERMAN	36
4 GERMAN LANGUAGE+ CAMPS	38
5 ACCOMMODATION	42
6 PRICES	44

HERZLICH WILLKOMMEN!



THE EURASIA INSTITUTE IS AN EDUCATIONAL INSTITUTION WITH A VISION

Communicating means connecting and only true understanding brings people together. This is the ideal behind the Berlin-based EURASIA Institute, where we use our expertise to bring people (and their languages) from all over the world together. EURASIA is part of the Klett Group, one of Europe's leading education providers. Klett supports us in our vision, and in working with our partner, we believe we can make a world of difference. We are a very international team, embodying warmth, diversity and respect. We come from Germany, the United Kingdom, Russia, Pakistan, Hungary, Tunisia, Belarus, Romania, Bahrain, China, Uganda, Italy and the United Arab Emirates and we all speak one or more foreign languages. All of us are highly socially and empathically skilled, a primary quality for leading an institution that brings people together from different cultures from the world over.

FACTS ABOUT THE INSTITUTE

The EURASIA Institute is a well-established pathway provider for university entrance in Germany, with around 600 students per year. Founded in 1993 by the British sinologist, Andrew Geddes, the institute has been providing education solutions in around 80 countries for almost a quarter of a century: for high-school graduates, postgraduates, career-seekers and educational institutions. In collaboration with partner

schools and universities worldwide EURASIA offers institutionalised pathway programmes within the framework of dual degrees and academic exchange programmes.

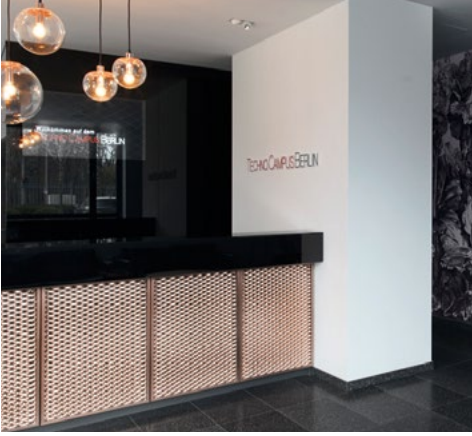
The Institute is registered with the Berlin Senate for Education, Science and Research and is an accredited test centre for all university entrance exams.

STUDY WITH US IN GERMANY

If you have just finished school or completed a Bachelor's or Master's degree in your home country, why not consider pursuing higher studies in Germany and prepare with us for your career?

At present, more than three hundred thousand foreign students are studying at German universities. As the powerhouse of the European economy, Germany is at the top of the list of countries exporting education and is one of the largest foreign investors and employers around the globe. The German universities offer excellent opportunities both for students and graduates, while the immigration laws welcome young and optimistic people and experts to set up home here. The EURASIA pathway programme equips you - as an international student - with all the tools you need to make a success of your studies here.

ABOUT EURASIA THE EURASIA VISION



WHY STUDY IN GERMANY?

Reasonable education costs

Low living costs

The living costs for one month in Berlin are comparable to living costs for one week in London.

Extremely diverse and cosmopolitan atmosphere



Many innovative and interdisciplinary Bachelor's & Master's programmes



Huge job opportunities after graduation

Officially recognized quality

EURASIA is an accredited exam centre for TestDaF, TestAS and telc.

Over 20 Years of experience



STUDENT SERVICES

ABOUT EURASIA



WE WILL TAKE CARE OF YOU

When you are the new kid in town you probably need some help. Berlin can seem overwhelming at first, and you will have a lot on your mind. The EURASIA Institute offers everything you need to help you settle in. We support our students with a range of services including accommodation, airport transfer, police registration, health insurance, opening a bank account, visa extension, student mentoring and, of course, university placement. At our monthly welcome seminars you will get to know our team as well as students from all over the globe. Later, our state insurance partner AOK talks you through the process of registration for statutory student insurance which is necessary for final university placement. Eurasia organizes various after-school activities as an integral part of the German language courses. Our team accompanies you throughout these activities on your discovery of the city of Berlin, offering you the opportunity to learn more about German culture by experiencing it first-hand!

OUR SERVICES & STUDENT SUPPORT

Pre-arrival

- + Accommodation
- + Health insurance
- + Airport transfer

Post-arrival:

- + Welcome seminar
- + Police registration
- + Opening bank account
- + Visa extension
- + University placement
- + Activities programme
- + Student mentoring

WHY STUDY IN GERMANY?



FOCUS ON YOUR GERMAN

At EURASIA we make the difficult process of settling down in Germany easy for you. Not only can we explain to you all you need to know, we will do most of the trips to the public authorities FOR you. Our doors are open to any questions or concerns you may have, ensuring you feel safe and taken care of in the new environment. Without the added stress, you will be able to improve your German much faster.



STAY WITH A HOST FAMILY

We try to create the perfect learning environment, so you can see quick results. A very popular way to do that is to live with a German host family. Not only will you notice a faster improvement, you will also experience what German family life and culture are really like. Your host family will include you in their activities, show you around Berlin and can additionally support you in your new home.



EXPERIENCE GERMAN CULTURE

Berlin is a vibrant and exciting place with many things to offer. But it can also be overwhelming. Every week we offer extra curricular activities, so you can discover the city together with your classmates and EURASIA staff. This way you get to try out new things regularly, meet and get to know new friends quickly, learn more about Germany's way of life and history and – of course – practise your language skills.



PATHWAY PROGRAMMES

BOARDING SCHOOL



YOUR PROFILE

You have completed around nine years of school and are interested in completing your school education at one of EURASIA's partner schools in the vicinity of Berlin in order to acquire direct entrance to a German university. The pupils of these international high schools are predominantly from local German families. As an international pupil you will live with a German host family during the pathway course in Berlin, before moving to the boarding school, where you will live in the school boarding facilities for the whole three-year period.

KEY POINTS

- + Solid German language training at an early age
- + German high school certificate (Abitur)
- + Direct university entrance for all subjects including medicine in Germany after finishing international high school





NAME OF THE COURSE

- + Boarding School



COURSE DESCRIPTION

- + Intensive language preparatory course from A1 to B2 at EURASIA Institute
- + Three year school course for pupils aged 15+
- + Entrance to German state university after school graduation



DURATION

- + 24 week German course
- + 1st to 3rd year – International high school



QUALIFICATION

- + Abitur (German high school certificate)



ENTRY REQUIREMENTS

- + Completed lower secondary school in home country



DOCUMENTS

- + Copy of birth certificate,
- + Legally certified copy of the last three school reports and/or examination certificates translated into German
- + Certificates of German language attained
- + Statement of financial commitment of parent or guardian
- + Letter of motivation
- + Passport copy
- + 3 passport photos



DATES & DEADLINES

- + **PATHWAY EURASIA** All year round
- + **Application Date Boarding School** 30.04.
- + **Course Start at Boarding School** 30.08.

PATHWAY PROGRAMMES



THE COURSES

EURASIA Institute works with a large university network to place eligible international students for Bachelor's and Master's degrees. Students can choose almost any field of study. German education is known throughout the world for its excellence, flexibility and for the range of opportunities it offers. A degree from one of the carefully selected universities we work with will give you the qualifications you need to be internationally successful. The degree programmes in the majority of cases are free of charge and living costs for students in Germany are low in comparison with countries like Great Britain or the US. As 95 % of the courses offered at German universities are taught in German. Therefore EURASIA Institute offers pathway programmes including comprehensive German language preparation for university studies. Our German teachers are highly qualified and have many years of experience in teaching German as a foreign language. In addition, all teachers have lived abroad for a longer period of time, and specialise in one or more foreign languages and cultures. In addition to their instructive language classes, our teachers are well-placed for supporting course participants in their intercultural and daily challenges.

The Pathway Programmes include the following services

PRE-ARRIVAL SUPPORT

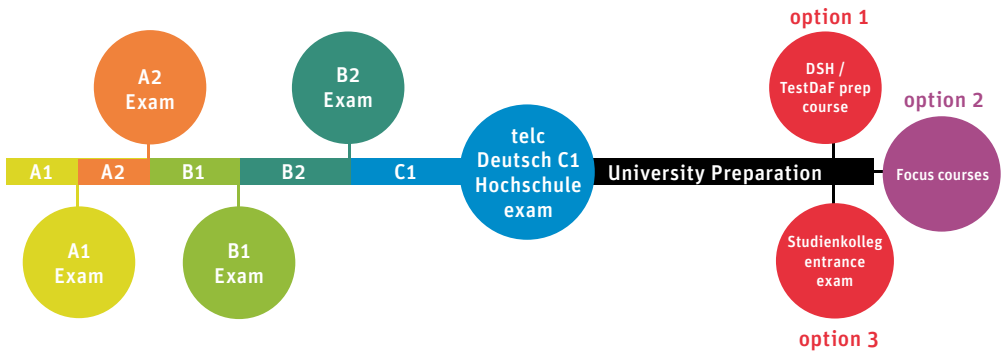
- + University conditional letter (student's confirmation of eligibility to study in Germany)
- + Visa documentation
- + Blocked account opening
- + Provisional insurance
- + Visa support

PREPARATION PROGRAMME & SUPPORT WITH UNIVERSITY APPLICATION (9 MONTHS)

- + Intensive language preparation course from A1 to C1 (6 weeks/level, 30 lessons/week)
- + Preparation for entrance exam at university (STK/TestDaF/DSH exam)
- + Individual advisory service and counselling for final admission
- + Student service support
- + Reservation of accommodation

PATHWAY PROGRAMMES

SCHEDULE OF THE PATHWAY PROGRAMMES



REQUIREMENTS

FOR BACHELOR'S DEGREE PROGRAMMES: **

DIRECT ACCESS

- + Higher Secondary School Certificate
- + Depending on country of origin: 1-2 successful years of study at a recognised university in your home country may also be required

ACCESS THROUGH FOUNDATION YEAR (STUDIENKOLLEG)

- + Higher Secondary School Certificate (depending on country of origin)
- + Average grade not less than 65% for subjects in the fields of business/economics, engineering, science and humanities
- + Average grade not less than 90% for subjects in the field of medicine

FOR MASTER'S DEGREE PROGRAMMES: **

- + 3 or 4 year Bachelor's Degree (depending on the country) from a recognised university

** Requirements of application for foreign students differ from country to country. Some programmes might require a higher average grade. Pre-evaluation of the documents is carried out to give you your own personal an individual assessment.

GERMAN FOUNDATION YEAR (FAST TRACK – TECHNICAL & BUSINESS) ACADEMIC PATHWAYS



YOUR PROFILE

You have completed your schooling with good grades and have a clear idea of what you want to study. The three trimester programme is a super-intensive course combining language and foundation courses. You qualify for German university entrance and are prepared to invest part of your winter and summer holidays to save a whole year of study preparation.

KEY POINTS

- + All-inclusive programme with guaranteed university entrance to business and engineering programmes at selected universities
- + First trimester may be taken abroad at partner schools (subject to availability)
- + No blocked account requirement
- + Save a whole year of study preparation and more than 50% on living costs
- + Matriculation on arrival with official student status and free public transport ticket
- + Combination of language preparation, foundation and academic methodology
- + The fastest option to be admitted to a Bachelor's degree after successful graduation
- + International learning atmosphere

ALL-INCLUSIVE PROGRAMME – INCLUDED IN THE PACKAGE

- + Airport pick-up
- + Accommodation for 1 year (shared room - singles only available on special request and subject to availability)
- + One-year intensive study programme including language course from A0 to C1
- + Health, accident & liability insurance
- + Student ticket for public transport
- + Confirmation of financial status: blocked bank account with university and monthly living allowance
- + Individual university advisory service & support and counselling for university application



NAME OF THE COURSE

- + German Foundation Year



COURSE DESCRIPTION

- + One-year academic pathway programme
- + Studies in language, culture and academic methodology
- + After successful graduation you can start the Bachelor's degree



DURATION

- + 1st year – Language qualification & foundation course
- + 2nd to 4th year – Bachelor's Degree



QUALIFICATION

- + Bachelor's Degree



ENTRY REQUIREMENTS

- + Higher Secondary School Certificate
- + Good knowledge of English



DOCUMENTS

- + Translated and legally certified Higher Secondary School Certificate and transcript of records
- + Proof of English language skills
- + CV
- + Letter of motivation
- + Passport copy
- + 3 passport photos



DATES & DEADLINES

- + Application Date University 31.05.
- + Course Start at University September

FOUNDATION STANDARD STATE TRACK

ACADEMIC PATHWAYS



YOUR PROFILE

You have completed your school education and still require equivalence with the German Abitur to be accepted for German university programmes. Here you have the chance of entering the German higher education system through a foundation year (Studienkolleg), where you will choose the track related to your studies (M for Medical, T for Technical, W for business and G for humanities).

KEY POINTS

- + No tuition fees for state foundation programme
- + Full student status during the foundation programme
- + Right to do part time work up to 20 hs/wk
- + International learning atmosphere





NAME OF THE COURSE

+ Foundation Standard State Track



COURSE DESCRIPTION

- + 32 weeks of language and 4 weeks of maths training and exam preparation
- + One-year Foundation Programme (Studienkolleg)
- + Entrance into any undergraduate degree programme at a German state University



DURATION

- + 1st year – Language qualification
- + 2nd year – Foundation course
- + 3rd to 5th year – Bachelor's Degree



QUALIFICATION

+ Bachelor's Degree



ENTRY REQUIREMENTS

+ Higher Secondary School Certificate



DOCUMENTS

- + Translated and legally certified Higher Secondary School Certificate and transcript of records
- + Passport copy
- + 3 passport photos



DATES & DEADLINES

PATHWAY EURASIA All year round

Application Date University 15.07./15.01.

Course Start at University October/April

FOUNDATION ELITE ENGINEERING & BUSINESS TRACK (TU-BERLIN)

ACADEMIC PATHWAYS



YOUR PROFILE

You are strong at science subjects, one of the best in your class, and have a clear picture of your future career in the area of business administration or engineering. You are ready to invest in the foundation pathway to maximise your chances of entering the relevant degree programme at a top German university. The programme is run in cooperation with the Technische Universität Berlin. After the intensive German language training you will be ready to tackle the entrance exam for the B2 level foundation programme. The programme begins twice a year in the summer and winter semesters. Once you have secured your place, you can concentrate on the final hurdle of passing the FSP examination which will secure your entrance into any German state university to pursue studies in fields of business or engineering.

KEY POINTS

- + Secured entrance into German state university after passing FSP examination
- + Full student status during the foundation programme
- + Excellent preparation for studies



NAME OF THE COURSE

- + Foundation Elite Engineering & Business Track (TU-Berlin)



COURSE DESCRIPTION

- + 32 weeks of language and 4 weeks of maths training and exam preparation
- + Two semesters of foundation W- or T-course at TU Berlin
- + Entrance to programmes in business studies, engineering and technical fields



DURATION

- + 1st year – Language qualification
- + 2nd year – Foundation course
- + 3rd to 5th year – Bachelor's Degree



QUALIFICATION

- + Bachelor's Degree



ENTRY REQUIREMENTS

- + Higher Secondary School Certificate



DOCUMENTS

- + Translated and legally certified Higher Secondary School Certificate and transcript of records
- + Passport copy
- + 3 passport photos



DATES & DEADLINES

PATHWAY EURASIA All year round
Application Date University 30.06./30.11.
Course Start at University Oktober/April

FOUNDATION MEDICAL ELITE TRACK (CHARITÉ)

ACADEMIC PATHWAYS



YOUR PROFILE

You are strong at science subjects, one of the best in your class with outstanding grades, and have a clear picture of your future career in the area of human medicine, dentistry, pharmacy, veterinary science or biology related subjects. You are willing to follow a secure foundation pathway to maximise your chances of entering the relevant degree programme at a top German university.

The Pathway is run in cooperation with the Charité International Academy and the Technische Universität Berlin.

After our intensive German language training programme, you will be ready to sail through the B2 level entrance exam for the foundation programme. Once you have secured your place, you can concentrate on the final hurdle of passing the FSP examinations which will secure you entrance into any German state medical university.

KEY POINTS

- + Practical tutorials in the teaching hospital
- + Special support with your application to read medicine after foundation
- + Reading medicine at state university is free of charge for international students
- + Incredible savings compared with medical studies in the US or UK



NAME OF THE COURSE

+ Foundation Medical Elite Track (Charité)



COURSE DESCRIPTION

- + 32 weeks of language and 4 weeks of maths training and exam preparation
- + 2 semesters foundation programme with TU Berlin and Charité (Studienkolleg)
- + Entrance into any German state medical university



DURATION

- + 1st year – Language qualification
- + 2nd year – Foundation course (M-track)
- + 3rd – 8th year – State medical exam



QUALIFICATION

+ State medical exam



ENTRY REQUIREMENTS

+ Higher Secondary School Certificate



DOCUMENTS

- + Translated and legally certified Higher Secondary School Certificate and transcript of records
- + Passport copy
- + 3 passport photos



DATES & DEADLINES

PATHWAY EURASIA All year round
Application Date University 30.06./30.11.
Course Start at University Oktober/April

DIRECT BACHELOR (ALL PROGRAMMES)

ACADEMIC PATHWAYS



YOUR PROFILE

You have completed your schooling or university degree and are already qualified for university entrance in Germany. All that remains now is to process the application for your chosen academic programme and straddle the final hurdle of passing the language exam. This may sound like a mammoth task but 1000s of successful students have trodden this pathway before you, so you can feel comfortable and confident, as we will assist and accompany you until your final matriculation in the desired academic programmes.

KEY POINTS

- + Higher guarantee of entering university
- + More convenient application process
- + Time efficient
- + Right to do part time work up to 20 hs/wk





NAME OF THE COURSE

+ Direct Bachelor (all programmes)



COURSE DESCRIPTION

- + 32 weeks of language preparation and special TestDaf or DSH preparation course
- + Focus courses
- + Entrance into any undergraduate degree
- + Programme in German State University



DURATION

- + 1st year – Language preparation
- + 2nd-4th year – Bachelor's Degree



QUALIFICATION

+ Bachelor's Degree



ENTRY REQUIREMENTS

+ Higher Secondary School Certificate



DOCUMENTS

- + Translated and legally certified High School Certificate and transcript of records
- + Passport copy
- + 3 passport photos



DATES & DEADLINES

PATHWAY EURASIA All year round

Application Date University 15.07./15.01.

Course Start at University October/April

COLOGNE BUSINESS SCHOOL (CBS)

ACADEMIC PATHWAYS



YOUR PROFILE

You are looking for an internationally oriented Bachelor's or Master's programme at one of Germany's top Business Schools? Founded in 1993, Cologne Business School (CBS) is a private, internationally oriented, state-recognised university of applied sciences. Located in the heart of Europe, Germany, CBS Cologne Business School provides a wide range of Business Administration and Economic-related courses, all taught in English except for two study courses which are taught in German. Students and lecturers from all over the world get to meet each other on the international CBS campus. Study programmes are offered in German and English and start once a year in August.

KEY POINTS

- + Book an everyday survival German course (special price) in Berlin before CBS to make the most out of your experience and secure your visa in record time
- + Fantastic student support and guidance from professors, faculty and service department staff
- + Very practice- and career-oriented



- + Excellent network with almost 1,000 well-known (inter)national enterprises in all industries

ENGLISH STUDY PROGRAMMES

- + Prep4University (Foundation Course/Studienkolleg)
- + Bachelor
- + Master
- + MBA

GERMAN STUDY PROGRAMMES

- + Prep4University (Foundation Course/Studienkolleg)
- + Bachelor (Business Psychology, General Management)
- + Master (Business Psychology, General Management)



NAME OF THE UNIVERSITY

+ Cologne Business School (CBS)



PROGRAMME DESCRIPTION

+ Choose from a huge range of business related programmes taught in English medium. Maximise your career chances in German companies on the fast track by taking the 16 week survival German course beforehand in Berlin!



DURATION

+ Prep4University – 16 week survival German course (optional) in Berlin + 1 year university preparation
+ Bachelor – 3 years
+ Master – 2 years
+ MBA – 1 to 2 years



QUALIFICATION

+ Bachelor's or Master's Degree / MBA



ENTRY REQUIREMENTS

Requirements for Bachelor's Courses

+ Secondary school certificate and university qualification or full entrance qualification for a university of applied sciences
+ Equivalent qualification from schools abroad (e.g. A-level, International Baccalaureate, Matura etc.) are recognised accordingly
+ English programmes: TOEFL or IELTS or alternative English certificates, German programmes: DSH or the TestDaF or equivalent

Requirements for Master's Courses

+ Bachelor's degree in related field of study
+ Good grades in all fields
+ English programmes: TOEFL or IELTS or alternative English certificates, German programmes: DSH or the TestDaF or equivalence



DOCUMENTS

+ Please ask for the application check-list



DATES & DEADLINES

Application Date University 15.05.
Course Start at University August

MASTER'S IN GERMANY

ACADEMIC PATHWAYS



YOUR PROFILE

You have completed a Bachelor's degree and now want to explore the opportunities for pursuing a Master's degree in Germany. You have had some work experience? Even better! Those looking to broaden their horizons are in the right place with us. If you have a clear idea about what your future specialization might be, absolutely fantastic. A German Master's degree is a powerful tool if you wish to gain a globally-recognised academic degree and work in a German company or have plans for your own business.

KEY POINTS

- + Thousands of career oriented Master's degree programmes to choose from
- + Huge range of interdisciplinary Master's programmes especially in technical fields of study
- + Strong relations between German universities and industry
- + 18 month job-search visa with excellent job opportunities and PR after completing Master's degree





NAME OF THE COURSE

+ Master in Germany



COURSE DESCRIPTION

- + 32 weeks of language and special preparation for DSH/TestDaF
- + Focus courses
- + Entrance into any German state university



DURATION

- + 1st year – Language qualification
- + 2nd year – Theoretical semesters
- + 3th year – Practical internship and Master's thesis
(The programme may vary depending on university)



QUALIFICATION

+ Master's Degree



ENTRY REQUIREMENTS

+ Completed Bachelor in your home country preferably with First Class Honours in the same or related field as the proposed Master's (Depending on the country, a 3 or 4 year Bachelor's Degree is required)



DOCUMENTS

- + Translated and legally certified Bachelor's and Higher Secondary School Certificate and transcript of records
- + CV
- + Letter of motivation
- + Letter of reference
- + Passport copy
- + 3 passport photos



DATES & DEADLINES

PATHWAY EURASIA All year round

Application Date University Please ask our consultant

Course Start at University October/April

DUAL BACHELOR'S WITH INTEGRATED VOCATIONAL TRAINING CAREER PATHWAYS



- + BSc Dental Hygiene and Prevention Management
- + BSc Nursing
- + BSc Physician Assistant



YOUR PROFILE

You intend to follow a career in the medical field and can relate to a perfect blend of hands-on learning with academic theory in one of the above fields. These practically oriented academic degrees open new doors with vast career prospects in Germany – at the same time you keep your options open to continue pursuing an academic career with a Master's degree later on. Your university, praxisHochschule, has three locations in Cologne, Heidelberg and Rheine. Since you are required to work in a dental or medical clinic as part of your academic training, the monthly salary you earn will more or less pay for the tuition fees for the 3 year Bachelor's programme. On graduation you will have an academic degree as well as being a highly skilled professional. Due to the extremely high demand for medical personnel in Germany and this being exacerbated by a rapidly ageing society, you will enjoy excellent career and earning prospects upon graduation

KEY POINTS

- + Best education: vocational and academic training in one
- + Financial advantage: work and earn as you study
- + Career advantage: guaranteed employment opportunities



NAME OF THE COURSE

+ Direct Bachelor (all programmes)



COURSE DESCRIPTION

- + 32 weeks of language preparation and special TestDaf or DSH preparation course
- + Focus courses
- + Entrance into any undergraduate degree
- + Programme in German State University



DURATION

- + 1st year – Language preparation
- + 2nd-4th year – Bachelor's Degree



QUALIFICATION

+ Bachelor's Degree



ENTRY REQUIREMENTS

+ Higher Secondary School Certificate



DOCUMENTS

- + Translated and legally certified High School Certificate and transcript of records
- + Passport copy
- + 3 passport photos



DATES & DEADLINES

PATHWAY EURASIA All year round

Application Date University 15.07./15.01.

Course Start at University October/April

PREPARATION FOR PHYSICIANS CAREER PATHWAYS



YOUR PROFILE

You are a doctor from overseas with work experience and wish to specialise further in a German clinic in a particular field of medicine with a view to setting up in practice as a doctor in Germany in the future. Your pathway provides you with a solid foundation for a medical career in Germany and will enable you to set up practise as a doctor.

The goal of the preparation programme is to develop your language skills in such way as to make you fit both for the German job market as well as for the everyday communication with your patients in the clinical setting. After completing the programme you will be able to begin your specialist training at a German clinic.

KEY POINTS

- + Pre-selection skype interview and consultation in your home country
- + Support with and coaching for compiling written job application
- + Individual application training for prospective job interviews with an HR specialist
- + Special clinical communication training with Charité Berlin
- + Preparation for the equivalence examination (optional)
- + Support with finding internship, on-the-job-training as well as permanent employment
- + Very good salary during specialist training in German clinics

OVERVIEW OF THE STEPS WHICH LEAD TO THE SPECIALIST TRAINING

1. Language training
2. Application and interview training
3. Medical communication training
4. Employment contract
5. Equivalence exam
6. Specialist training



NAME OF THE COURSE

+ Preparation for Physicians



COURSE DESCRIPTION

- + 32 week super-intensive German language course including medical terminology
- + 6 weeks clinical communication training course at Charité International Academy Berlin
- + Equivalence preparation course (optional)



DURATION

- + 1st year – Language preparation, clinical communication training, application training, internship
- 2nd to 7th year – medical specialist training



QUALIFICATION

- + Training to become specialist doctor



ENTRY REQUIREMENTS

- + Qualified doctor with work experience and doctor's license from home country



DOCUMENTS

- + University certificate and transcripts
- + Professional license as a doctor
- + CV
- + Letter of reference
- + Passport copy
- + 3 passport photos



DATES & DEADLINES

PATHWAY EURASIA All year round

Application Date University All year round

Course Start at University January/May each year

NURSING IN GERMANY

CAREER PATHWAYS



YOUR PROFILE

You are a trained nurse or qualified medical staff and have completed your training since the accession of your country into the EU. Alternatively you have many years of work experience in the medical field and gained your vocational training before EU accession. You wish to follow a career in the medical field outside of your home country and are motivated to learn a new language and adapt to a familiar working environment in a new cultural context. The demographic situation in Germany is creating a huge demand for people with your profile which can only be met at an international level. You will enjoy excellent career and good earning prospects working in this field in Germany.

KEY POSITIONS

- + Examined nursing staff with three years of work experience
- + Specialist nurses for operations, intensive care and anaesthesia
- + Nursing assistants
- + Physiotherapists, masseurs, pool attendants
- + Ergotherapists
- + Speech therapists
- + Physician assistants

KEY POINTS

- + Direct contact with future potential employers (clinics and hospitals in Germany)
- + Skype interview after pre-screening of your application documents
- + A1 and A2 German language in your home country with minimal financial investment
- + Professional support with job application procedures
- + Interview training for all shortlisted candidates
- + Financial advantage: future employer pays 50% towards your language training
- + Clinical German and hospital communication language course
- + Final exam telc B2 German for Nursing, a recognised professional language qualification
- + Hospital or clinic internship before final employment
- + Employment at one of many excellent partner clinics in Germany
- + Guaranteed return of language course investment after 3 years with your employer

MAIN EMPLOYEES

- + Emergency hospitals
- + Rehabilitation clinics
- + Senior citizens homes
- + Medical treatment centres
- + Doctors' practises

OVERVIEW OF THE PROGRAMMS' DIFFERENT STEPS

In your home country

Application	A1 and A2 level German	Interview with clinic
-------------	------------------------	-----------------------

In Germany

B1 and B2 level German and clinic orientation	Clinical communication course	Telc exam B1/B2 German for Nursing	Telc exam B1/B2 German for Nursing	Final job-application	Employment contract
				Internship at clinic	Application and interview training

MODEL 1 Hiring institution offers partial financing of the language preparation course on the basis that the applicant will work for a minimum of three years. If the contract is ended by the employee before the end of this period, the fees will be repaid proportionately to the clinic.

MODEL 2 The applicant is free to choose any clinic offering work in Germany. In this case the applicant will carry the whole cost of the training course as well as the risk of not finding an employer.

NOTE During the application process Eurasia will do its utmost to secure final employment for the applicant. Since personal factors also play an important role in the individual screening process of employers, it is not possible for us to give a 100% guarantee of final employment.

PRICE OF PROGRAMME FOR APPLICANT: 3400€ – PAYABLE IN 3 INSTALMENTS

1. 400€ application fee when signing and after pre-screening of application.
2. 500€ before beginning the A2 course (6 weeks, 180 course units) in your homecountry.
3. 500€ before beginning the A2 course (6 weeks, 180 course units) in your homecountry.
4. 2000€ after being shortlisted for the clinic in Germany and before moving to the clinic.

PRICE OF PROGRAMME FOR CLINIC: 3400€ – PAYABLE IN 1 INSTALMENT

The remaining 3400 € for your B1 and B2 course after your arrival at the clinic will be financed by your future employer. These fees include 12 weeks with 360 course units including exam preparation for telc German B2 for Nursing as well as the 4 week (180 course units) clinical communication training. The telc exam fees are also included in this package. In addition, the clinic will provide your accommodation during the courses and the internship period (total 24 weeks).

HOSPITALITY INTERNSHIPS

CAREER PATHWAYS



YOUR PROFILE

You are a trained hospitality student and have just completed your university studies. Set on starting a career in hotel management, you are eager to gain professional experience in an exciting and vibrant environment, as well as learn a new language. Our career oriented internship programmes might be just what you're looking for.

Our intensive German language training programme will ensure that you will reach B2 level proficiency, providing you with enough skills to begin your career in Germany. Alongside the language course, we also provide an orientation course into German culture and work ethics, as well as professional career and application coaching, giving you a head start into the German job market.

In cooperation with established hotels and hospitality businesses, we offer a number of different internship positions that can be tailored to meet your needs.

Begin your career with an orientation internship at one of Germany's leading four-star hotel chains. This unpaid, three-month internship could open exciting new doors for your career development in the hospitality industry. If you are looking for more extensive, hands-on experience, you can pick a paid six-to-twelve-month internship. Positions are available in service, front-desk and reception, catering and kitchen, as well as accounting.

KEY POINTS

- + Pre-selection with skype interview and CV for guaranteed placement
- + Accredited examinations (telc)
- + Orientation week including crash course in German language, culture and work ethics
- + Optional intensive German language courses up to B2 level
- + Supervision, evaluation and quality control of internships
- + Online career placement support and services
- + Access to EURASIA cultural activities programme in Berlin

OPTIONAL

- + Career coaching, interview preparation and application support
- + Comprehensive insurance package
- + Arrival transfer services
- + Accommodation services (incl. shared apartments and host family programmes)



NAME OF THE COURSE

+ Professional Internship Placement Programme



COURSE DESCRIPTION

- + 1 week orientation into German work culture
- + Optional 2–24 week super-intensive German language course
- + 3-month-orientation-internship, unpaid or
- + 6–12-month-professional-internship, paid
- + On-the-job training depending on employer
- + Optional career coaching seminars



DURATION

- + Optional 1 week to 6 months – language preparation, training and preparation (depending on previous level and job requirements)
- + 3–12 months – internship at German hotel or hospitality business



TARGET

- + Your first active step into a hotel management or catering industry career



ENTRY REQUIREMENTS

- + Experience and education in the hospitality sector
- + Skype or phone interview before placement



DOCUMENTS

- + Certificates of academic background and experience
- + Portrait photo for application
- + Passport photo
- + Copy of passport
- + CV



DATES & DEADLINES

EURASIA Internship programme

All year round, depending on availability of positions



SALARY FOR PAID INTERNSHIPS

Minimum wage is €8.50 per hour



YOUR PROFILE

Do you want to be one of 229 million people communicating in the German language? Improve your career prospects in the global economy? Get to know a large European culture? Study or do research in Germany? Or simply plan an extensive trip through Germany, Switzerland and Austria?

As the capital of Germany, with around 4 million inhabitants, Berlin is the focal point of cultures. People from all around the world come to Berlin and enjoy the multicultural atmosphere of this metropolis. Your German course takes place close to the centre of West Berlin and a stone's throw from the famous Charlottenburg Castle.

In our school you will be taught by qualified German teachers whose goal is your quick and sustained learning success. Our professional German teachers are characterized by an academic education and a significant amount of teaching experience. Our students enjoy learning German in a relaxed and personal

atmosphere. The international diversity in our German language courses guarantees an interesting and exciting intercultural experience.

We offer German courses at all language levels from A1 to C1 with both intensive courses and individual tailor-made solutions. We have a maximum of 18 participants in one group.

KEY POINTS

- + Very intensive language course and tested course structure
- + Highly motivated and experienced German teachers
- + Friendly and international learning atmosphere
- + Cultural activities and tours in Berlin
- + Different kinds of language certificates
- + Special courses for study preparation (exam prep/technical language prep)

OVERVIEW OF THE LANGUAGE LEVELS

LEVEL GROUP A		LEVEL GROUP B		LEVEL GROUP C	
Basic User		Independent User		Proficient User	
LEVEL A1	LEVEL A2	LEVEL B1	LEVEL B2	LEVEL C1	LEVEL C2
Beginner	Elementary	Intermediate	Upper Intermediate	Advanced	Proficiency



NAME OF THE COURSE

+ General German



COURSE DESCRIPTION

- + Intensive language preparation (all levels)
Monday–Friday
- + Preparation courses for TestDaF, DSH and telc exam
format training



DURATION

- + 1 to 32 weeks
- + A1 und A2: 5 weeks
- + B1: 6 weeks
- + B2 und C1: 8 weeks
- + 30 lessons per week



QUALIFICATION

+ Language Certificate, telc, TestDaF, DSH



ENTRY REQUIREMENTS

+ None



DOCUMENTS

- + Application form
- + Passport copy
- + 3 passport photos



DATES & DEADLINES

- + Every month for beginners
- + Every week for previous German learners

GERMAN SUMMER CAMP IN WANDLITZ

14.07.-24.07.2017 + 4 DAYS OPTIONAL



BASIC PROGRAMME AND EXCURSIONS

The EURASIA international summer camp is designed for teenagers between 13 and 19 years old and includes full board and accommodation at the lakeside location in Wandlitz, situated to the north of Berlin and equipped with all modern facilities. The facilities include furnished seminar rooms where you will get your daily dose of tuition from native language teachers. The basic programme includes German classes at beginners or elementary level (A1/A2) in the morning and 10 days of activities. The weekends are reserved for fun activities and excursions in and around Berlin. A farewell party and disco is one of the big highlights of the camp, rounding off an unforgettable learning holiday! The camp is followed by...

OPTIONAL 4-DAY TRIPS

In addition to the basic 10-day programme in Berlin-Wandlitz, you have the opportunity to join us in an amazing 4-day trip to further improve your German skills and experience an awesome tour with your international mates!

You can choose between two options:

- + 4-day trip around Germany
- + 4-day trip to Vienna

LOCATION

On the verge of Berlin, you will experience the best of both the vibrant metropolis and the peaceful settings between forests and lakes. Berlin city is just a short train ride away, living and learning in an idyllic lakeside setting you will have direct access to various activities, (i.e. water sports, horse-riding, raft-building, biking, soccer). If art and culture are your thing, Berlin will provide you with amazing insights into modern art and culture with trips to galleries and museums.

MEALS

Breakfast is served every day on site, while lunch can either be taken on site or as a packed lunch if you have an excursion day. Evening meals are something to look forward to! Once a week there is a barbecue on site, while on the other days you will alternate between local German and international cuisine served by local restaurants. The weekly barbecue and campfire also give you a chance to get to know people of your age from all around the world in a relaxed and familiar setting.

FACILITIES

All rooms have 4 beds and en-suite hygiene facilities. A total of 100 places are available. Facilities for wheelchair users are available on request and should be booked well in advance.

SUMMER CAMP HIGHLIGHTS



BERLIN CITY BOAT & WALKING TOUR

Get to know this multi-faceted metropole, exploring the Berlin Wall, East Side Gallery, Brandenburg Gate, Potsdamer Platz, Alexander Platz, Unter den Linden, Checkpoint Charlie... and much more!



TRIP TO AUTOSTADT: AUTOMOBILE PARK

Visit the Automobile City in Wolfsburg, its enormous car factory, the pavilions of the most famous automobile companies and enjoy its exciting multimedia activities.



VISITING HEIDE PARK RESORT

Visit one of the biggest amusement parks and enjoy its thrill rides and steep roller coasters! Are you brave enough to enter the horror maze?



FAREWELL PARTY

At the end of your stay we will throw a party in your honour, with a delicious international party catering, live performances and the best DJ set.



4-DAY TRIP AROUND GERMANY (OPTIONAL)

Explore Germany, a world of spectacular landscapes, enchanted castles, great history and culture, cosy villages, modern cities and high-technology.



4-DAY TRIP TO VIENNA (OPTIONAL)

Vienna is one of the most culturally rich cities worldwide, with its vibrant music scene, fascinating imperial history and exciting innovative museums.



PROGRAMME DESCRIPTION

The EURASIA German Soccer Camp coached by official Bundesliga trainers offers all true football lovers the opportunity to spend an unforgettable sport & learning holiday! You are between 13 and 19 years old, are passionate about soccer and want to improve your soccer skills, especially ball possession, tackling, scoring and penalties. Working with the official Bundesliga junior league trainer of 1st FC Union Berlin, you can expect to develop a wide range of skills, while at the same time participating in an amazing international and intercultural experience together with like-minded young people. The fun doesn't end on the soccer pitch! Before training you will get the chance to learn German, the language of the world champions. Fun activities and cultural trips are all part of the package too. In the evening you can relax at the lakeside by the BBQ and socialize with young people from around the globe. Don't miss the opportunity to join this programme devoted to all true football lovers.

KEY POINTS:

- + Residential Lakeside Soccer Camp near Berlin, the capital of Germany
- + 24/7 pastoral care team
- + Intensive training programme with German League Coaches
- + Exclusive Training Kit
- + Tour of Berlin's Bundesliga Team Stadium
- + Full board and accommodation on site
- + Local trips and excursions
- + Optional local sport activities
- + Visit to a stadium
- + Farewell Party



MINI WORLD CUP TOURNAMENT

At the end of the programme a German Soccer Camp mini World Cup organised by EURASIA will provide the opportunity for you to test your acquired skills and play against teams from Berlin, Brandenburg and all around the world: German Soccer Camp teams will test their skills against local amateur teams and international student teams!

TRAINING INCLUDES

- + Ball control
- + Dribbling
- + Passing
- + Shooting
- + Crossing
- + Heading

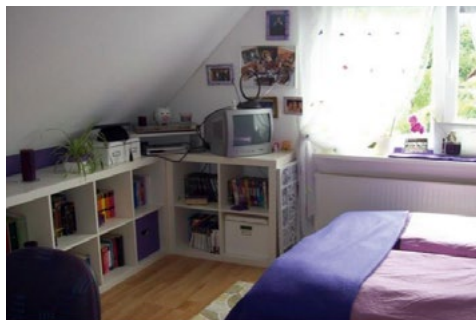
For each of these techniques there will be a test procedure to review the development of the players.



HAVE A NICE STAY

1. SHARED APARTMENT

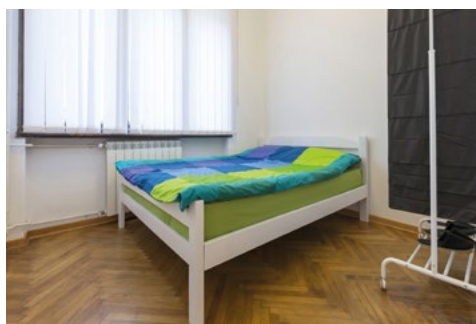
In a shared apartment, you will have your own room, while kitchen and bathrooms are shared with other flatmates. Board (e.g. breakfast) is not available with this accommodation type. This option gives you a chance to meet with new people from different backgrounds.



Accommodation type	Single or double room in a shared apartment
Advantages	Share experiences with young international people and enjoy student life
Bookingcodes	SR-SA-SC/DR-SA-SC
Room type	Single room/Double room
Board	Self-catering only
Facilities	Bathroom & kitchen shared with flat-share members
Booking deadline	Before visa application and 4-8 weeks before arrival, minimum: 12 weeks

2. HOSTEL / YOUTH HOSTEL

Students who wish to be independent during their language course and take it easy in a relaxed and friendly atmosphere with international backpackers may choose to stay at a youth hostel. We have an arrangement with a hostel situated only 15 min from the EURASIA Institute using public transport. The hostel offers single and shared rooms including breakfast buffet.



Accommodation type	Hostel, self-catering
Advantages	All services included, minimise travelling time, total independence
Bookingcodes	SR-HO/DR-HO
Room type	Single room/Double room
Board	B&B
Facilities	Standard hostel/hotel facilities
Booking deadline	Category not available for student visa

3. HOMESTAY

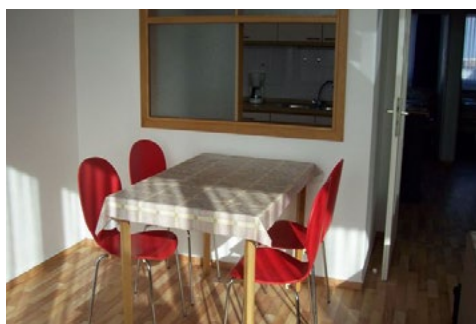
Living with a homestay during your German language course in Berlin will not only be of great help to you in learning the German language fast, but it is an interesting intercultural experience as well. Some students feel more comfortable living in a homestay rather than in a youth hostel, a shared apartment or a student residence. If you choose this option, you will have your own furnished room, while kitchen and bathrooms are shared. Homestays can be booked with or without meals.



Accommodation type	Single room in homestay
Advantages	Live in a German language environment, get to experience the culture firsthand
Bookingcodes	SR-HS-SC/SR-HS-BB/SR-HS-HB/SR-HS-FB
Room type	Single room
Board	SC, B&B, HB, FB
Facilities	Bathroom & kitchen shared with homestay hosts
Booking deadline	Before visa application and 4-8 weeks before arrival

4. PRIVATE APARTMENT

This kind of accommodation has the advantage of greater personal freedom and less risk of intercultural or generational conflicts. You will nevertheless be in a building with many other people from all over the world and you will have the opportunity to meet your neighbours and make new friends.



Accommodation type	Private apartment
Advantages	Privacy and independence
Bookingcodes	SR-PA-SC
Room type	En-suite
Board	Self-catering only
Facilities	Private kitchen & bathroom
Booking deadline	Before visa application and 4-8 weeks before arrival Minimum booking: 12 weeks

PRICES

PATHWAY PROGRAMMES	
Academic pathways	
Application fees for all Pathway Programmes	400 €
Boarding School (price for the 24-week-programme including full-board accommodation with German host family. For information about boarding school tuition fees please contact your consultant.)	14,412 €
German Foundation Year – All inclusive (Fast Track – Technical & Business)	19,980 €
Foundation Standard (State Track)	8,500 €
Foundation Elite Engineering & Business Track (TU-Berlin)	12,000 €
Foundation Medical Elite Track (Charité)	13,500 €
Direct Bachelor (all programmes)	8,500 €
Dual Bachelor's with vocational training	8,500 €
Cologne Business School (CBS)	
Prep4University English/German (incl. application fee)	11,100 €
Bachelor's and Master's	Price upon request
Master in Germany	8,500 €
Career Pathways	
Preparation for Physicians	9,950 €
Preparation for Nurses (50% of the price will be paid by future employer)	6,800 €
Unpaid Internship Package	1,500 €
Paid Internship Package	1,900 €

GENERAL GERMAN	
Level A1 (5 weeks, 6 lessons per day, course materials are included)	1,190 €
Level A2 (5 weeks, 6 lessons per day, course materials are included)	1,190 €
Level B1 (6 weeks, 6 lessons per day, course materials are included)	1,390 €
Level B2 (8 weeks, 6 lessons per day, course materials are included)	1,890 €
Level C1 (8 weeks, 6 lessons per day, course materials are included)	1,890 €
Course fee for 1 week/2 weeks/extra week	250 €/400 €/200 €
Registration fee for locals/tourists	0 €/100 €
Student Visa Support	400 €
Individual tuition for 5 lessons	200 €
GERMAN SUMMER CAMP PROGRAMMES	
Summer Camp in Wandlitz (10-days Basic)	1,500 €
Summer Camp in Wandlitz + 4-day trip around Germany	2,000 €
Summer Camp in Wandlitz + 4-day to Vienna / Austria	2,250 €
German Soccer Camp	2,500 €
SURCHARGES	
Courier Charge	50 €
Appeal fee in case of visa refusal	200 €
Health, Accident & Liability Insurance (per month)	50 €
Transfer Charge 1-way	90 €
Individual university placement (for free choice of university)	1,000 €
STUDY PREPARATION COURSE	
Studienkolleg (4 weeks, 30 lessons per week)	950 €
DSH (4 weeks, 30 lessons per week)	950 €
TestDaf (2 weeks, 30 lessons per week)	475 €
Focus courses (M,W, T) 4 weeks, 30 lessons per week	950 €

ACCOMODATION

Weeks	Single room in homestay / self-catering	Single room in shared apartment	Private apartment
1	not available	404 €	578 €
2	not available	462 €	660 €
3	not available	578 €	825 €
4	660 €	770 €	1,100 €
12	1,800 €	2,100 €	3,000 €
16	2,400 €	2,800 €	4,000 €
20	3,000 €	3,500 €	5,000 €
24	3,600 €	4,200 €	6,000 €
28 best price	3,925 €	4,579 €	6,542 €
32	4,486 €	5,234 €	7,477 €
36	5,047 €	5,888€	8,411 €
extra week	140 €	164 €	234 €

+ key money deposit: 500 €

BOARD PER WEEK (ONE OPTION FOR THE WHOLE STAY)

Breakfast: +66 €

Half-board: +132 €

Full-board: +198 €

AOK Nordost Become a member and feel secure

According to German law, every student is required to have health insurance and all universities require an insurance certificate for registration. AOK Nordost supports your transition from language school to university.

WE OFFER YOU:

- **AOK Student Service:** individual advice directly on-site in your university
- Long opening hours and quick help
- Free choice among over 130.000 doctors and dentists
- No advance payments thanks to your AOK card
- **Affordable premiums**
- **International health insurance for your healthcare abroad**

YOUR PERSONAL CONTACT:

Serena Manno	Tel:	0800 265080-27141
AOK International Sales	Mobile:	0172 8161937
Karl-Marx-Allee 3	Fax:	0800 256080-27141
10178 Berlin	E-Mail:	serena.manno@nordost.aok.de

Your health in the best hands

aok.de/nordost



EIIE EURASIA INSTITUTE for
International Education GmbH
info@eurasia-institute.com
www.eurasia-institute.com

ALBERT GRUPPE

EDUCATION
MADE IN GERMANY

